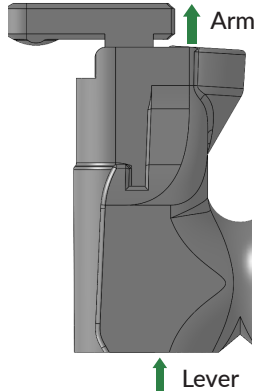


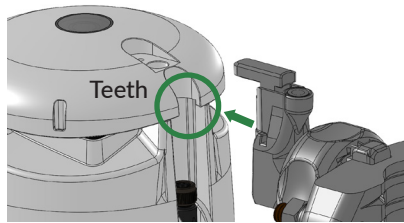
Attaching the AM-270 to the Guardian

1. Press the lever on the bottom of the AM-270 straight up with your thumb to unlock the arm of the bracket. Bracket is in the unlocked position when the arm raises and the lever disappears into the body.
2. With the AM-270 in the unlocked position, attach the arm to the back of the Guardian. The grooves on the bracket should slot into the teeth on the lower ridge of the Guardian.
3. Press straight down on the arm to lock the bracket onto the Guardian. Bracket is in the locked position when the arm is flush to the body and the lever appears again.
4. After the bracket is locked onto the Guardian, it is ready to be mounted. To adjust the sensor orientation, see the other side.

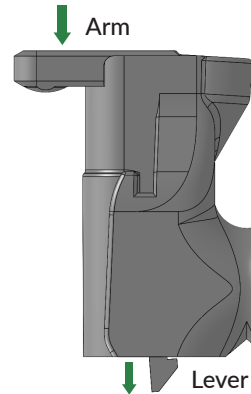
1



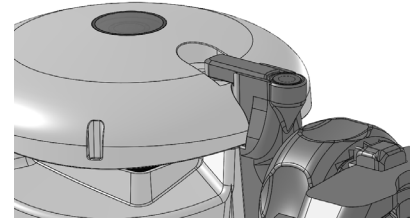
2



3

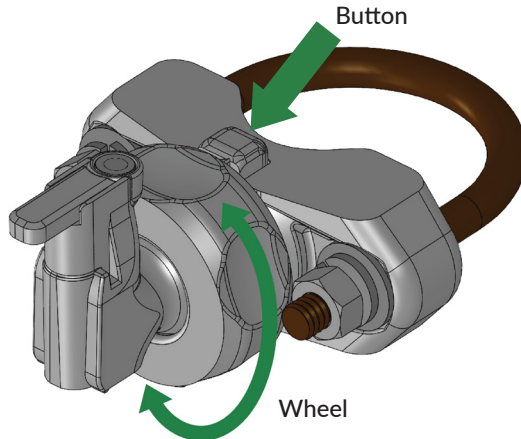


4



Changing Orientation of Guardian on Bracket

1. Press the button behind the wheel to unlock the orientation of the Guardian.
2. While holding down the button, twist the wheel counter-clockwise to loosen it.
3. Move the arm and Guardian to the desired orientation while the wheel is loosened.
4. Twist the the wheel clockwise to the desired tightness to return to the locked position.
5. Mount the bracket and Guardian to a pole or cross arm using the u-bolt.



AM-270 webpage



Guardian webpage

To access full product manuals, visit
[https://www.apogeeinstruments.com/
product-manuals/](https://www.apogeeinstruments.com/product-manuals/)